

Flexible plate



Modular flexible plate without anchoring

Patented surface enabling vehicles to cross all types of slippery soils: grass, sand, gravel or mud



ADVANTAGES



- > Non-slip surface
- > Non-skid surface
- > Grip improvement on soil up to 20%
- > Flexible
- > Light
- > Robust
- > Permeable
- > 100% recyclable
- > UV and weather resistant
- > Customizable

Technical specifications

Dimension		Plate weight	Reference White
Width	Lenght		
1,05 m 3,5 ft	1 m 3,25 ft	10 kg 22 lbs	220521
1,05 m 3,5 ft	2 m 6,5 ft	20 kg 44 lbs	220563

Mobi-track™ MM3V25 can support up to 80 tons (depending on the type of soil)

Tensile strength*	> 100 kN/m 10 t/m 680lb/ft
Weight	10 kg/m² 2lb/sqft
Temperature of use & storage*	-40°C / + 80°C -104°F / +176°F

**Non-contractual technical data which does not constitute any guarantee*



Up to 5 years warranty



Company certified ISO 9001 and ISO 14001



Mobility : high grip & lift on the ground



Traffic

- > Cars
- > Trucks
- > Construction equipment



> **Technical surface** enabling traction to wheeled vehicles



> **Preservation of soil condition**

Fast installation and low maintenance

FAST INSTALLATION

Mobi-track™ is easy to deploy because it has no anchoring.
Unpack the mat on the surface to be crossed by your vehicle, repeat the operation many times as necessary!

EASY MAINTENANCE

Use a broom, a leaf blower or a high pressure water jet to clean Mobi-track™.

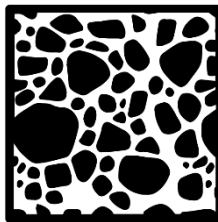
Store Mobi-track™ in a dry and clean place.



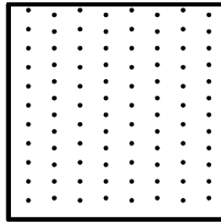
Usage on any type of soil



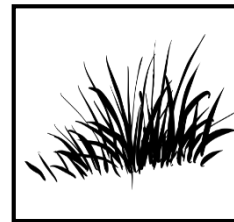
MUD



PEBBLE



SAND



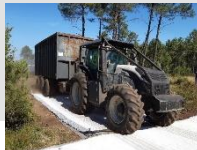
GRASS

What are our complementary products ?

Mobi-vehicle™
 Access mat A2X



Mobi-vehicle™
 Access mat MM3V25



Mobi-deck™
 Rigid panel



Traction-mat™
 Recovery mat



 info@mobi-mat.com