



-  **Non slip surface**  
tested in accordance with EN 16165 standard
- Boat ramp for boats, canoes, kayaks, paddles, jets ski and more...**
-  **Made with recycled materials**



### ADVANTAGES



- > Durable
- > 100% recyclable
- > Flexible & lightweight
- > Permeable
- > UV, weather & salt water resistance
- > Robust
- > Customizable
- > Highly engineered
- > Removable, easy installation with minimal ground preparation, by 2 people in less than 15min

### Technical specifications



2 years warranty



ISO 9001 & ISO 14001 certification



25 years experience of Access Mat solutions

#### Boatramp™ Lightweight AFX

Max load capacity → 3,5 tons and more  
(depending on the type of ground)

Dimension		Roll weight	Roll diameter	Blue Jay	Golden Sand
Width	Length				
1m 3.25ft	5 m   16 ft	8 kg   18lb	30 cm   12"	300248-0500	300252-0500
	10 m   33 ft	15 kg   33 lb	35 cm   14"	300249-1000	300253-1000
	15 m   50 ft	21 kg   46 lb	43 cm   17"	300249-1520	300253-1520
	20 m   66 ft	28 kg   62 lb	50 cm   20"	300250-2000	300254-2000
	25 m   82 ft	34 kg   75 lb	56 cm   22"	300250-2500	300254-2500
	30 m   100 ft	41 kg   90lb	58 cm   23"	300251-3040	300255-3040
1,50m 5ft	5 m   16 ft	11 kg   24 lb	30 cm   12"	300256-0500	300260-0500
	10 m   33 ft	21 kg   46 lb	35 cm   14"	300257-1000	300261-1000
	15 m   50 ft	31kg   68 lb	43 cm   17"	300257-1520	300261-1520
	20 m   66 ft	41 kg   90 lb	50 cm   20"	300258-2000	300262-2000
	25 m   82 ft	50 kg   110 lb	56 cm   22"	300258-2500	300262-2500
	30 m   100 ft	60 kg   132 lb	58 cm   23"	300259-3040	300263-3040
2m 6.5ft	5 m   16 ft	15 kg   33 lb	30 cm   12"	300264-0500	300268-0500
	10 m   33 ft	28 kg   62 lb	35 cm   14"	300265-1000	300269-1000
	15 m   50 ft	41 kg   90 lb	43 cm   17"	300265-1520	300269-1520
	20 m   66 ft	54 kg   119 lb	50 cm   20"	300266-2000	300270-2000
	25 m   82 ft	67 kg   148 lb	56 cm   22"	300266-2500	300270-2500
	30 m   100 ft	80 kg   176 lb	58 cm   23"	300267-3040	300271-3040
3m 10ft	3 m   10 ft	12kg   26 lb	25cm   8"	300470-0306	300276-0306
	5 m   16 ft	22 kg   49 lb	30 cm   12"	300470-0500	300276-0500
	10m   33 ft	42 kg   93 lb	35 cm   14"	300471-1000	300277-1000
	15 m   50 ft	61 kg   134 lb	43 cm   17"	300471-1520	300277-1520
	20 m   66 ft	81 kg   179 lb	50 cm   20"	300472-2000	300278-2000
	25 m   82 ft	100 kg   220 lb	56 cm   22"	300472-2500	300278-2500

Exact widths in m → 0,99m | 1,53m | 1,98m | 3,06m

#### Boatramp™ Heavy-duty A2X

Max load capacity → up to 40 tons  
(depending on the type of ground)

Dimension		Roll weight	Roll diameter	Golden sand	White
Width	Length				
1m 3.25ft	5m   16ft	10kg   22lb	40cm   16 "	300340-0500	-
	10m   33ft	18kg   40lb	50cm   20 "	300341-1000	-
	15m   50ft	26kg   57lb	55cm   22 "	300341-1520	-
	20m   66ft	35kg   77lb	60cm   24 "	300342-2000	-
	25m   82ft	43kg   95lb	65cm   26 "	300342-2500	-
	30m   100ft	51kg   112lb	70cm   27 "	300343-3040	-
2m 6.5ft	5m   16ft	19kg   42lb	40cm   16 "	300348-0500	-
	10m   33ft	35kg   77lb	50cm   20 "	300349-1000	-
	15m   50ft	52kg   115lb	55cm   22 "	300349-1520	-
	20m   66ft	68kg   150lb	60cm   24 "	300350-2000	-
	25m   82ft	85kg   187lb	65cm   26 "	300350-2500	-
	30m   100ft	101kg   223lb	70cm   27 "	300351-3040	-
3m 10ft	5m   16ft	27kg   60lb	40cm   16 "	300352-0500	-
	10m   33ft	52kg   115lb	50cm   20 "	300353-1000	-
	15m   50ft	77kg   170lb	55cm   22 "	300353-1520	-
	25m   82ft	126kg   278lb	65cm   26 "	300354-2500	-
4,20m 13.8ft	5m   16ft	38kg   84lb	40cm   16 "	-	220468-0500
	10m   33ft	72kg   159lb	60cm   24 "	-	220468-1000
	15m   50ft	107kg   236lb	65cm   26 "	-	220468-1520

Exact widths in m → 0,99m | 1,53m | 1,98m | 3,06m

## Easy installation & low maintenance

### QUICK INSTALLATION

Boatramp™ is easy and quick to install. **Unpack, unroll and anchor** the mat in the ground !

Standard spikes and staples are provided with the mat.

Additional anchoring options :

- **Concrete anchoring kit**
- **Wood anchoring kit**
- **Compact ground anchoring kit**
- **Underwater anchoring kit for soft ground**
- **Underwater anchoring kit for compact ground**



### EASY MAINTENANCE

Excellent corrosion resistance:

- **Galvanized steel anchors**
- **Aluminum rivets and stainless steel eyelets**

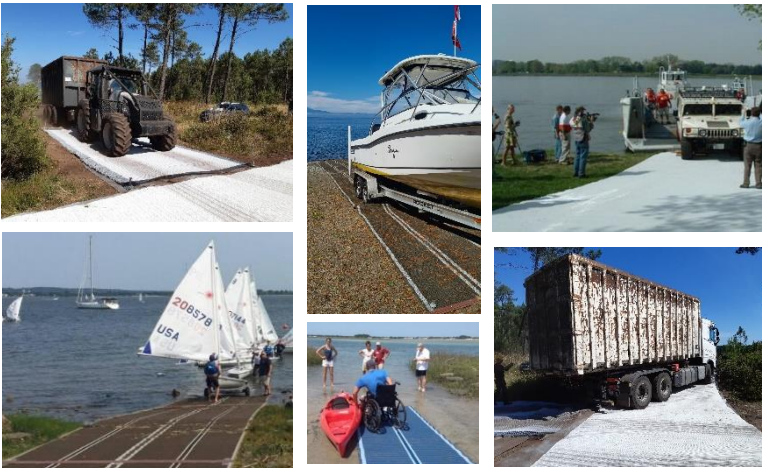
Use a broom, a leaf blower or a high pressure water jet to clean the Boatramp™

Tensile strength*	>100 kN/m   10 t/m   680lb/ft
Weight	<2kg/m <sup>2</sup>   0.4lb/sqft
Temperature: use & storage*	-40°C /+ 80°C   -104°F /+176°F
Combustion classification*	UL94 HB
Fire resistance	B <sub>FL</sub> -s1 (EN 13501-1)

*\*Non-contractual data*

## Applications: accommodating light and heavy traffic on unstable ground

### Maximum ground grip



**ADA/ABA compliant**  
Disabled standards



**Bare foot friendly– Boatramp™ AFX**

- > Soft
- > Heat resistant



**Pedestrians and family with**

- > Strollers
- > Wagon



**Traffic**

- > Bikes
- > Quads, Scooters...
- > Cars, trailers, floatplanes, boats...
- > Trucks & construction equipment



> **Corrugated surface** providing traction to wheeled vehicles

> **Preservation of soil condition**

## What are our additional products?

### Mobi-chair™ Floating Wheelchair



### Mobi-roller™ Mat dispenser



### Mobi-deck™ Rigid panel



### Mobi-fence™ Sand fence



 [info@mobi-mat.com](mailto:info@mobi-mat.com)